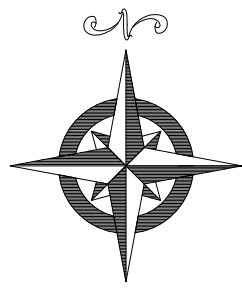
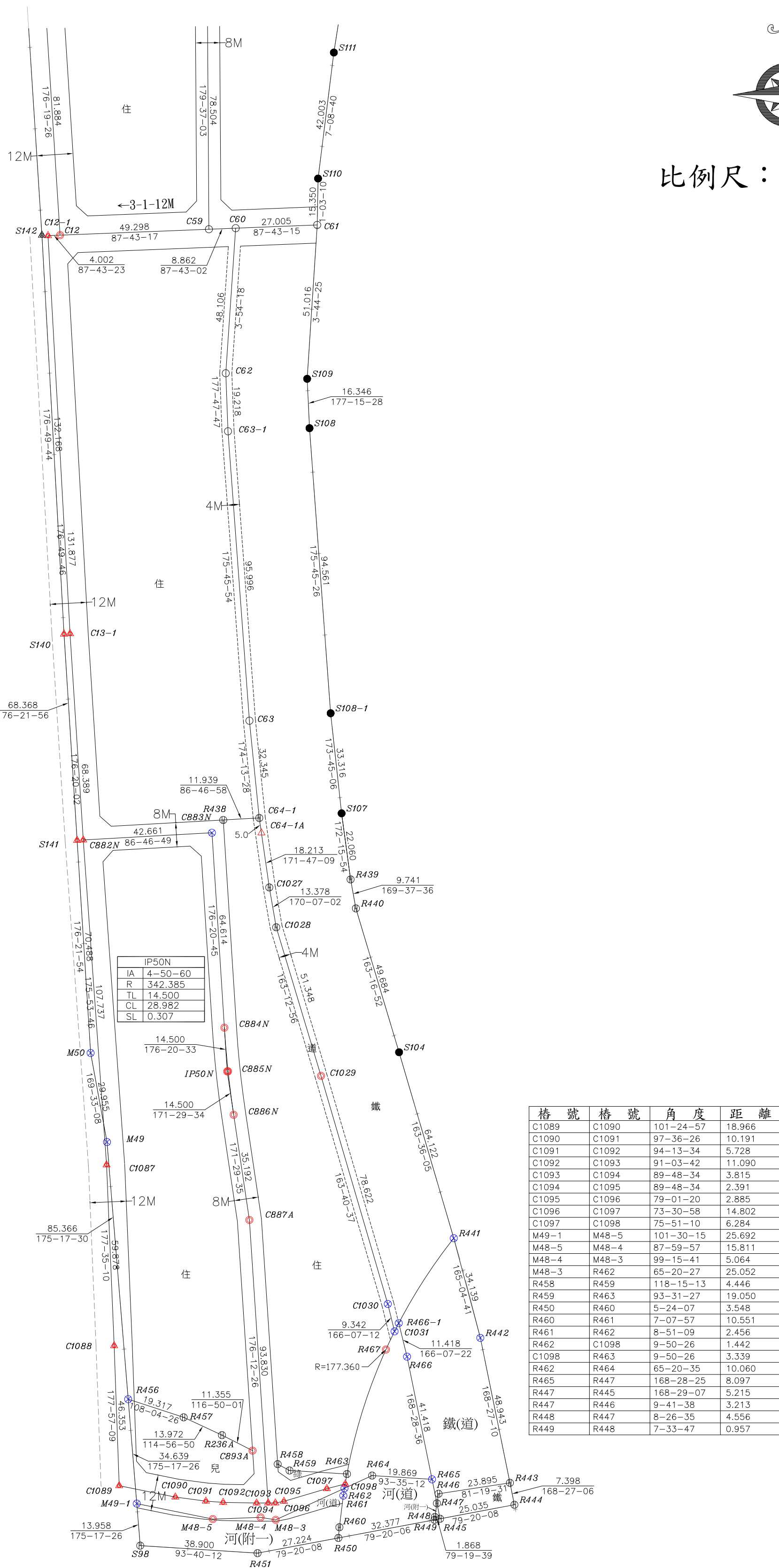


「擴大及變更后里主要計畫(第三次通盤檢討)(第二階段)-變8及變9案
(計畫區東南側內東路、廣成巷附近地區)」樁位成果圖



比例尺：一千分之一



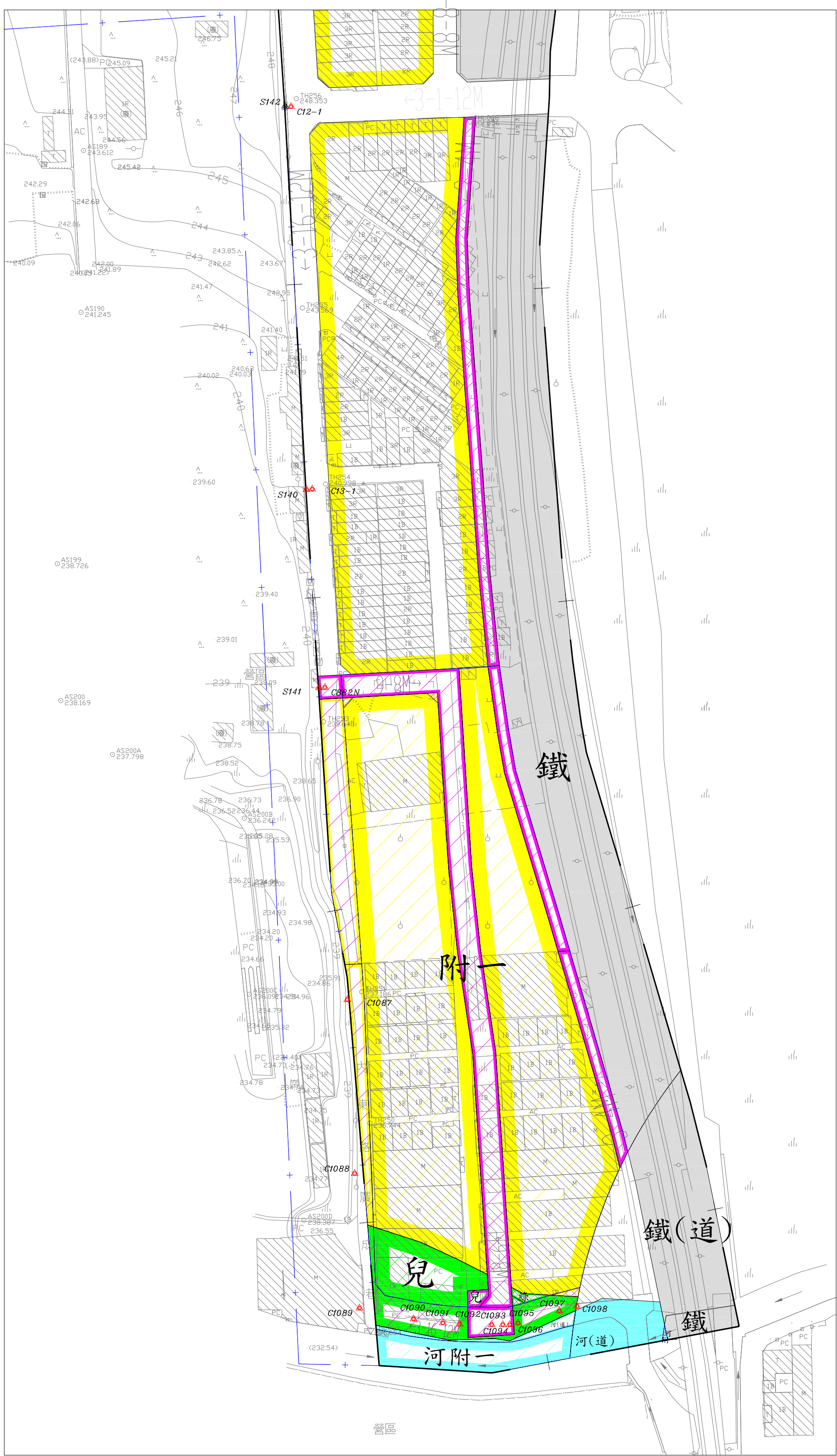
測量技師：
証書字號：台工登字第8558號



圖說編號:983-46
測量時間:106年08月
測量單位:亞興測量有限公司
公司住址:臺中市西區臺灣大道二段101號13樓
負責人:江俊泓
測量人員:劉坤明

樁位坐標成果表

| 點號 | 縱坐標 | 橫坐標 | 備註 |
|--------|-------------|------------|------|
| C12 | 2688799.763 | 222693.668 | |
| C12-1 | 2688799.604 | 222689.669 | |
| C13-1 | 2688667.929 | 222696.963 | |
| C64-1 | 2688606.963 | 222759.589 | |
| C64-1A | 2688602.014 | 222760.303 | |
| C82N | 2688599.680 | 222701.336 | |
| C83N | 2688602.076 | 222743.930 | |
| C84N | 2688537.593 | 222748.048 | |
| C85N | 2688523.156 | 222749.278 | |
| IP50N | 2688523.123 | 222748.973 | |
| C86N | 2688508.783 | 222751.118 | |
| C87A | 2688473.978 | 222756.324 | |
| C1027 | 2688583.988 | 222762.906 | |
| C1028 | 2688570.809 | 222765.202 | |
| C1029 | 2688521.648 | 222780.030 | |
| C1030 | 2688446.195 | 222802.127 | |
| C1031 | 2688437.126 | 222804.368 | |
| C1087 | 2688492.219 | 222709.046 | |
| C1088 | 2688432.394 | 222711.568 | |
| C1089 | 2688386.071 | 222713.224 | |
| C1090 | 2688382.317 | 222731.815 | |
| C1091 | 2688380.968 | 222741.916 | |
| C1092 | 2688380.546 | 222747.628 | |
| C1093 | 2688380.340 | 222758.716 | |
| C1094 | 2688380.353 | 222762.531 | |
| C1095 | 2688380.361 | 222764.922 | |
| C1096 | 2688380.910 | 222767.754 | |
| C1097 | 2688385.111 | 222781.948 | |
| C1098 | 2688386.647 | 222788.041 | |
| C893A | 2688397.671 | 222757.374 | |
| R236A | 2688402.797 | 222747.241 | |
| R438 | 2688606.293 | 222747.669 | |
| R441 | 2688467.957 | 222823.961 | |
| R442 | 2688434.969 | 222832.752 | |
| R450 | 2688368.798 | 222785.773 | |
| R451 | 2688363.760 | 222759.019 | |
| R456 | 2688414.683 | 222716.209 | |
| R457 | 2688408.690 | 222734.573 | |
| R458 | 2688393.212 | 222765.681 | |
| R459 | 2688391.107 | 222769.598 | |
| R460 | 2688372.330 | 222786.107 | |
| R461 | 2688382.799 | 222787.417 | |
| R462 | 2688385.226 | 222787.795 | |
| R463 | 2688389.936 | 222788.612 | |
| R464 | 2688389.423 | 222796.938 | |
| R465 | 2688386.180 | 222816.768 | |
| R466 | 2688428.763 | 222808.494 | |
| R466-1 | 2688439.847 | 222805.756 | |
| R467 | 2688431.113 | 222801.506 | |
| M48-3 | 2688374.774 | 222765.028 | |
| M48-4 | 2688375.589 | 222760.030 | |
| M48-5 | 2688375.037 | 222744.229 | |
| M49 | 2688499.761 | 222709.202 | |
| M49-1 | 2688380.161 | 222719.053 | |
| M50 | 2688529.219 | 222703.770 | |
| S98 | 268866.250 | 222720.199 | |
| S140 | 2688667.795 | 222694.967 | |
| S141 | 2688599.565 | 222699.301 | |
| S142 | 2688799.761 | 222687.656 | |
| C13 | 2688603.782 | 222703.041 | 廢除樁位 |
| R468 | 2688595.573 | 222699.555 | 廢除樁位 |
| C889N | 2688376.681 | 222762.734 | 廢除樁位 |
| R452 | 2688392.415 | 222757.716 | 廢除樁位 |
| R453 | 2688392.067 | 222750.608 | 廢除樁位 |
| R454 | 2688375.913 | 222750.758 | 廢除樁位 |
| R455 | 2688376.937 | 222766.726 | 廢除樁位 |



都市計畫樁位公告圖 SCALE=1/1000

圖例

| 樁別 | 說明 |
|----|----------|
| ○ | 道路中心樁 |
| ⊖ | 區界樁 |
| ⊕ | 副樁 |
| ⊙ | 虛樁 |
| △ | 新建樁位 |
| △ | 新建樁位(虛樁) |
| ⊕ | 恢復樁位 |
| ⊙ | 檢測樁位 |
| △ | 參考輔助點 |